

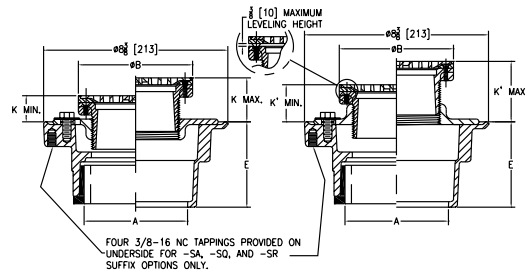
## ⌚ Z415 BODY ASSEMBLY WITH "TYPE BZ" LEVELING STRAINER



Patented

### ENGINEERING SPECIFICATION

Zurn ZN415BZ floor and shower drain features Dura-Coated cast iron body with bottom outlet, combination invertible membrane clamp and adjustable collar with seepage slots, and "TYPE BZ" polished nickel bronze, light-duty, leveling strainer.



Strainer Designation	Dimensions in inches [mm]						Str. Open Area sq in [cm <sup>2</sup> ]	Approximate Weight lb [kg]
	A Pipe Size	B Strainer Diameter	K		K'			
			Min.	Max.	Min.	Max.		
-5BZ	2 [51], 3 [76]	5-3/16 [132]	1-1/16 [27]	2-1/16 [52]	1-9/16 [40]	2-13/16 [71]	6-1/4 [40]	11 [5]
-6BZ	2 [51], 3 [76], 4 [102]	6-1/4 [159]	1-3/8 [35]	2-7/32 [56]	1-3/4 [44]	2-15/16 [75]	9 [58]	13 [6]

PREFIXES	DESCRIPTION	STRAINER DESIG.	PIPE SIZE	LIST PRICE
<b>ZN415*</b>	D.C.C.I. Body Assembly with Polished Nickel Bronze Top	-5BZ	2", 3"	<b>484.00</b>
		-6BZ	2", 3", 4"	<b>592.00</b>
<b>ZB415</b>	D.C.C.I. Body Assembly with Polished Bronze Top	-5BZ	2", 3"	<b>460.00</b>
		-6BZ	2", 3", 4"	<b>535.00</b>

OUTLETS (SPECIFY PIPE SIZE IN INCHES AND TYPE OF OUTLET)				
OUTLET TYPE		PIPE SIZE/ OUTLET TYPE	E BODY HT. DIM.	ADD
<b>IC</b>	Inside Caulk	2IC, 3IC, 4IC	4-13/16"	<b>N/C</b>
<b>IG</b>	Inside Gasket	2IG, 3IG, 4IG	4-13/16"	<b>N/C</b>
<b>IP</b>	Threaded	2IP	2-7/16"	<b>80.00</b>
		3IP	2-3/4"	<b>80.00</b>
		4IP	2-13/16"	<b>80.00</b>
<b>NH</b>	No-Hub	2NH, 3NH, 4NH	3-13/16"	<b>N/C</b>
<b>NL</b>	Neo-Loc	2NL, 3NL, 4NL	3-7/8"	<b>N/C</b>

SUFFIXES		ADD	
<b>-AA</b>	All Acid Resisting Epoxy	<b>261.00</b>	
<b>-AR</b>	Acid Resisting Epoxy Coated Cast Iron	<b>171.00</b>	
<b>-CP</b>	Chrome-Plated Bronze Top	<b>26.00</b>	
<b>-DP</b>	Decorative Polished Top	<b>171.00</b>	
<b>-G</b>	Galvanized Cast Iron	<b>198.00</b>	
<b>-OF</b>	Oval Funnel - 6" Strainer Only (See Z329-7)	ZB	<b>365.00</b>
		ZN	<b>421.00</b>
<b>-P</b>	Trap Primer Connection (1/2"*)	<b>N/C</b>	
<b>-PC</b>	Protective Cover	<b>64.00</b>	
<b>-SA</b>	Stabilizer Assembly (See Z1035)	<b>138.00</b>	
<b>-SQ</b>	Stabilizer Q-deck (See Z1035-Q)	<b>184.00</b>	
<b>-SR</b>	Stabilizer Ring (See Z400-SR)	<b>121.00</b>	
<b>-TC</b>	Neo-Loc Test Cap Gasket (2", 3", 4" NL Bottom Outlet Only)	<b>24.00</b>	
<b>-U</b>	1"-3" High Extension Adapter (See Z400-U)	D.C.	<b>140.00</b>
		Galv.	<b>306.00</b>
	For each additional 1" above 3"	<b>98.00</b>	
<b>-V</b>	Backwater Valve (Not Available with -Y)	<b>380.00</b>	
<b>-VP</b>	Vandal-Proof Secured Top	<b>58.00</b>	
<b>-Y</b>	Sediment Bucket (Not Available with -V)	<b>109.00</b>	
<b>-4</b>	4" Diameter Funnel (Z328)	ZB	<b>365.00</b>
		ZN	<b>421.00</b>
<b>-90</b>	90° Threaded Side Outlet Body Assembly (2" and 3" Only)	<b>219.00</b>	

BEST SELLERS	LIST PRICE
ZN415-2NL-5BZ-P	<b>484.00</b>
ZN415-2NL-5BZ-P-PC-TC	<b>572.00</b>
ZN415-2NL-6BZ	<b>592.00</b>
ZN415-3NH-5BZ	<b>484.00</b>
ZN415-3NH-5BZ-P	<b>484.00</b>
ZN415-3NH-6BZ	<b>592.00</b>
ZN415-3NH-6BZ-P	<b>592.00</b>
ZN415-3NL-6BZ	<b>592.00</b>
ZN415-3NL-6BZ-P	<b>592.00</b>
ZN415-4NH-6BZ-P	<b>592.00</b>
ZN415-4NL-6BZ	<b>592.00</b>

Supplied By:



**877-903-7246**

[www.commercialplumbingsupply.com](http://www.commercialplumbingsupply.com)

For additional product information, please visit [www.zurn.com](http://www.zurn.com)

\*Regularly furnished unless otherwise specified.

Items designated as Best Sellers are most specified and are generally in stock for shipment.

⌚ This symbol denotes a product that is engineered to reduce installation and rework time.